



# Food Insecurity In Southern Arizona





## Today's Presenters

### ▶ Jennifer Pullen

- ▶ Senior Research Economist and MAP Dashboard Program Coordinator, University of Arizona

### ▶ Michael McDonald

- ▶ CEO of the Community Food Bank of Southern Arizona

### ▶ Jaime Chamberlain

- ▶ President/Owner of Chamberlain Distributing Inc.



## Webinar Details

- ▶ **The webinar will be recorded**
  - ▶ See the MAP Dashboard website for recordings
- ▶ **Conference mode**
  - ▶ Everyone muted except presenter
- ▶ **How to ask a question**
  - ▶ Use the chat box
  - ▶ Email anytime to [ghammond@email.arizona.edu](mailto:ghammond@email.arizona.edu)



## Sustaining Sponsors



## Partners







# Arizona Daily Star

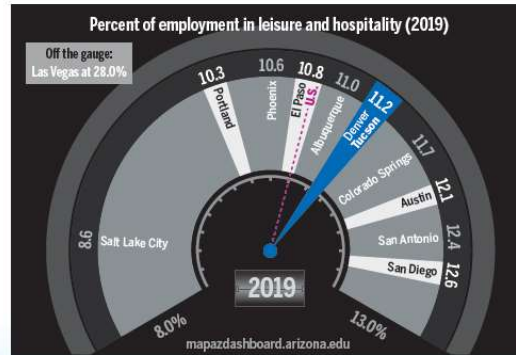
## Tucson economy: MAP Dashboard

Monthly Stats	Change Year/Year
Non-farm jobs <b>396,100</b> (Feb. 2020)	<b>+1.3%</b>
Unemployment rate <b>4.2%</b> (Feb. 2020)	<b>-0.3% pts.</b>
Median home price <b>\$245,000</b> (Feb. 2020)	<b>+10.6%</b>
Housing permits <b>324</b> (Feb. 2020)*	<b>+66.2%</b>

\*Single-family permits, based on U.S. Census Bureau data

### Coronavirus puts nearly 45K Tucson-area leisure, hospitality jobs at risk

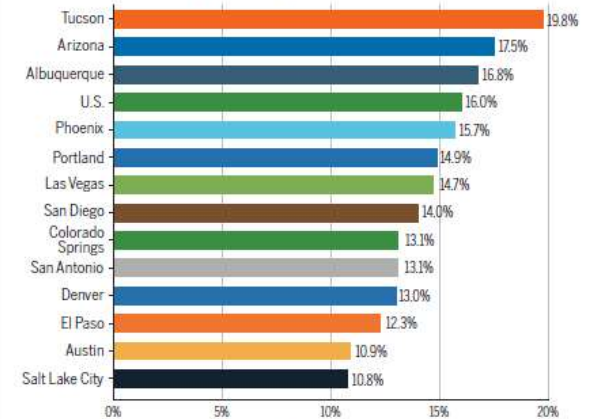
The spread of COVID-19 has created adverse economic impacts for the nation as well as Tucson. One sector that has been hit hard by the pandemic is the leisure and hospitality industry. This sector includes hotels, motels, restaurants and bars, as well as the arts, entertainment, and recreation. In 2019, there were 44,617 leisure and hospitality jobs in Tucson, which accounted for 11.2% of the total. That ranked Tucson sixth, tied with Denver, among peer western metros. Las Vegas posted by far the highest percentage of jobs in the leisure and hospitality sector at 28.0%. To learn more about the economic impact of COVID-19 visit the MAP Dashboard.



## Tucson's health: MAP Dashboard

The Centers for Disease Control and Prevention (CDC) released a set of guidelines for those most at risk for severe illness from COVID-19. Included on that list are older adults, those 65 and older, and people of all ages that have serious underlying medical conditions. The MAP Dashboard tracks the percentage of the population that falls into select age groups. Those who are 65 years and older represented 19.8% of Tucson's population in 2018, nearly 4 percentage points higher than the nation. This reflects the large number of retirees in the region. When compared to peer western metros Tucson had the highest percentage of those 65 and older by 3 percentage points. The CDC reports that 8 out of 10 deaths in the U.S. due to COVID-19 have been in adults 65 and older, while 31-59% of those age 65-84 who contract the virus will require hospitalization. Given the high percentage of those 65 and older in the region and the potential for hospital systems to become overloaded, Tucsonans should be extra vigilant in minimizing the spread of COVID-19.

### Share of population age 65 and older (2018)







**How Do Renters Fare?**

[Learn More](#)

**Tucson's Demographics Make it Vulnerable to COVID-19**

[Learn More](#)

**How Does Your Southern Arizona Community Compare?**

[Learn More](#)

**Understanding Chronic Disease Incidence and Prevalence**

[Learn More](#)

**Economic Impacts on Arizona**

**11.2%** Tucson 2019  
Employment in Leisure & Hospitality

[Learn More](#)

**Potential for Water Independence in Tucson's Communities**

[Learn More](#)

**Affordability in Tucson Varies Significantly By Income**

[Learn More](#)

**How Exposed are Tucson's Industries to a COVID-19 Recession?**

**17.2%** of Tucson Jobs  
In High-Risk Industries

[Learn More](#)

**Explore How Local Organizations Use the MAP**

[LEARN MORE](#)



# Key Topics Today

- ▶ **How Food Insecure is Tucson?**
  - ▶ How does Tucson compare to peer metro areas?
  - ▶ What percentage of the population has limited access to food?
- ▶ **How Food Secure are Tucson's Children?**
  - ▶ What percentage of households with children are food insecure?
  - ▶ How many children are enrolled in the Lunch Program?
- ▶ **Food Related MAP White Papers**
  - ▶ Farm-To-School Programs in Southern Arizona
  - ▶ Food Accessibility in Southern Arizona
  - ▶ A Comprehensive Food Access Analysis in Tucson
- ▶ **How will COVID-19 Impact Food Security?**





## How Food Insecure is Tucson?

**Will COVID-19 Increase  
Food Insecurity?**



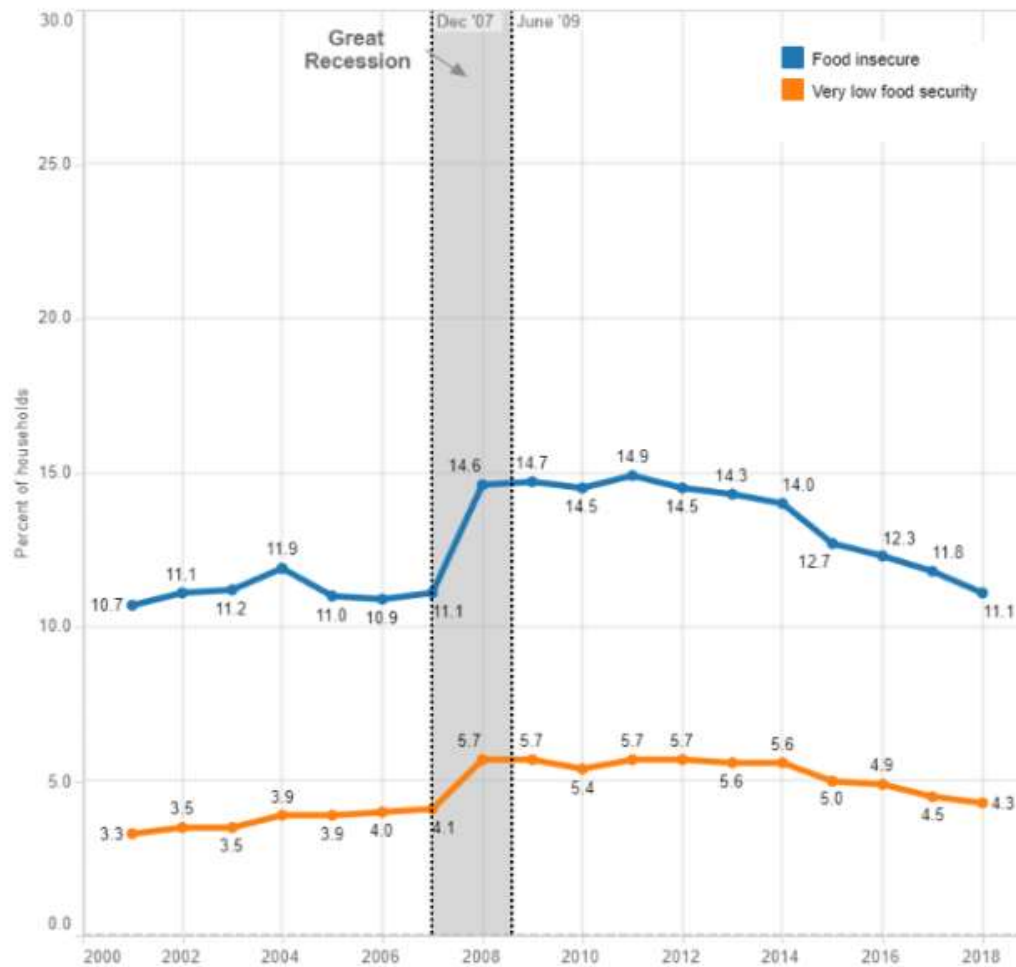
[Learn More](#)







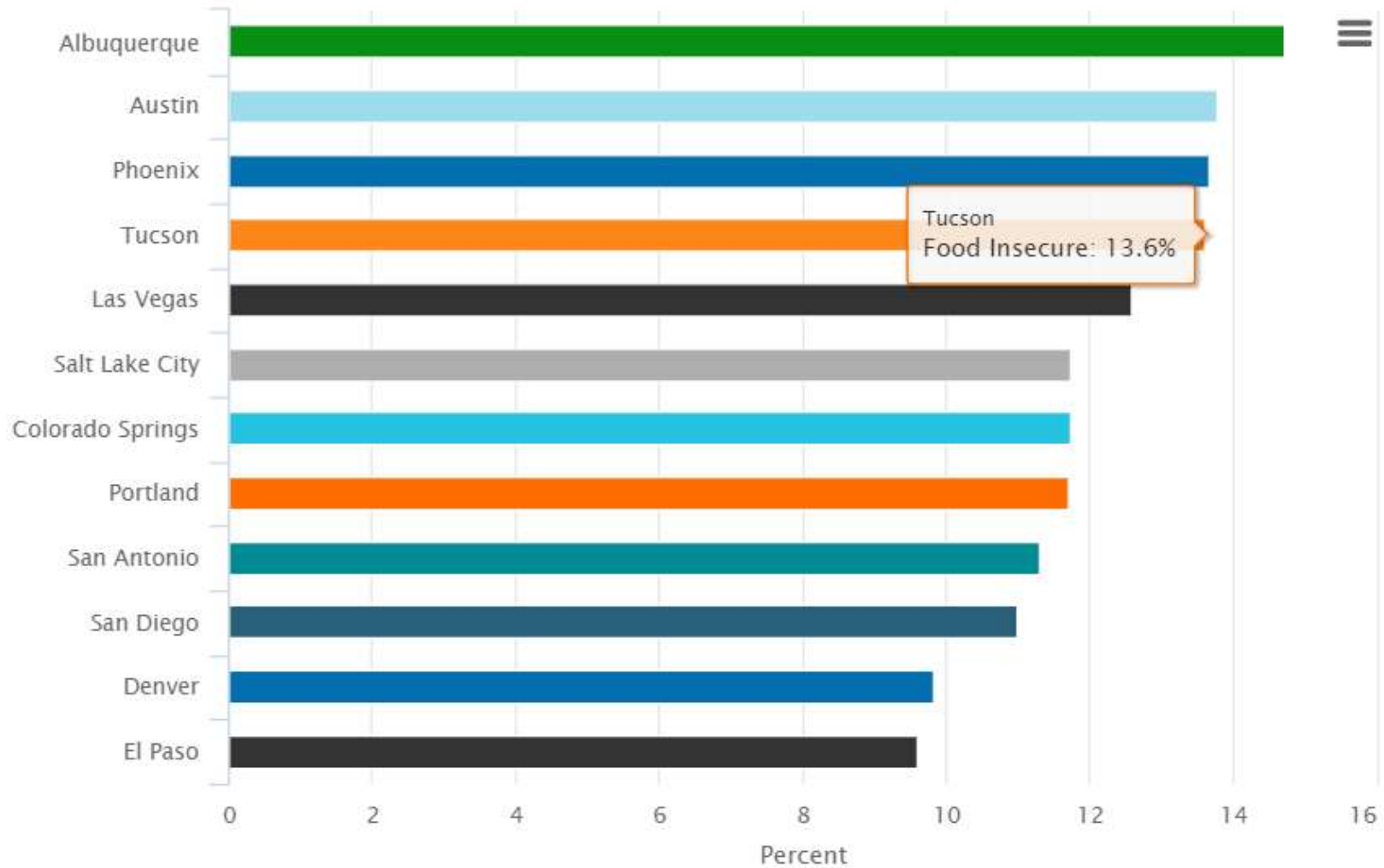
# Prevalence of Food Insecurity in U.S. Households



Source: Calculated by USDA, Economic Research Service, using Current Population Survey Food Security Supplement data.  
<https://www.ers.usda.gov/topics/food-nutrition-assistance/food-security-in-the-us/>

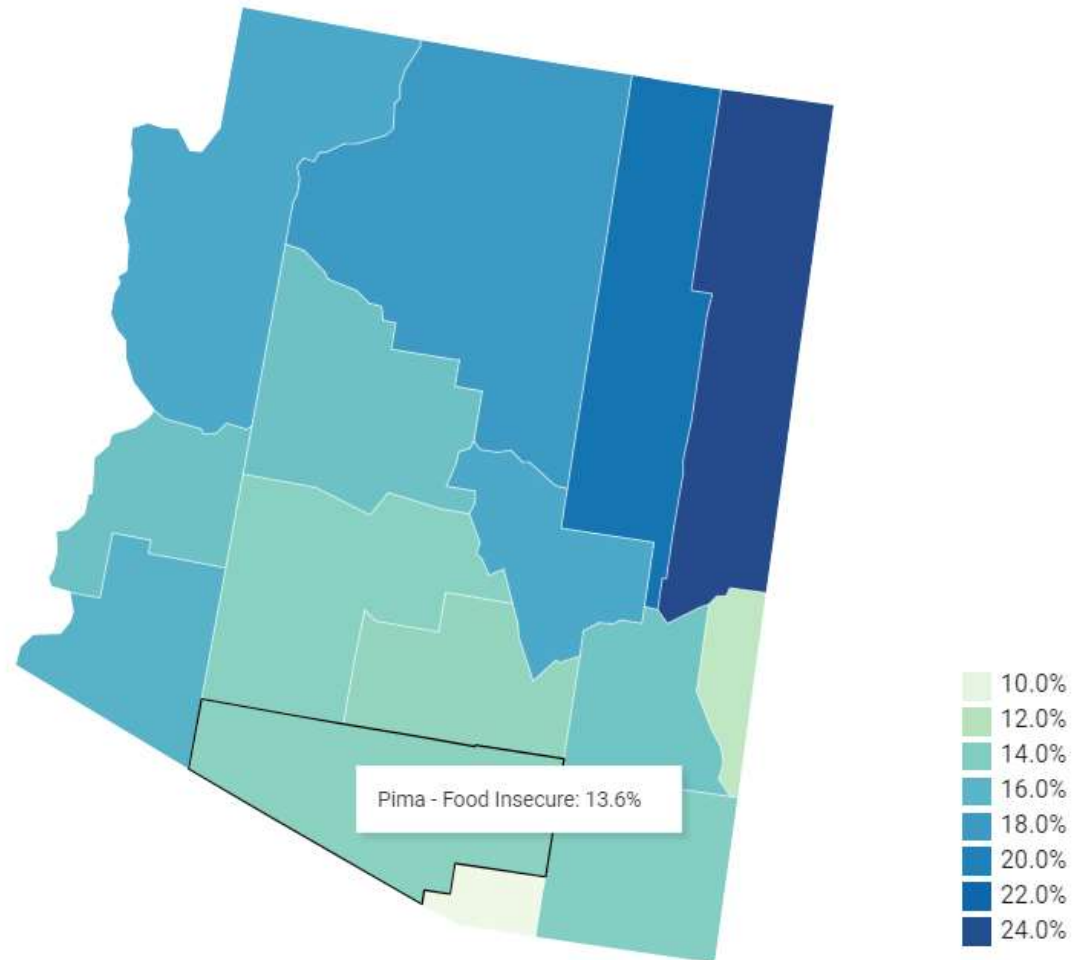


# Percent Food Insecure (2017)





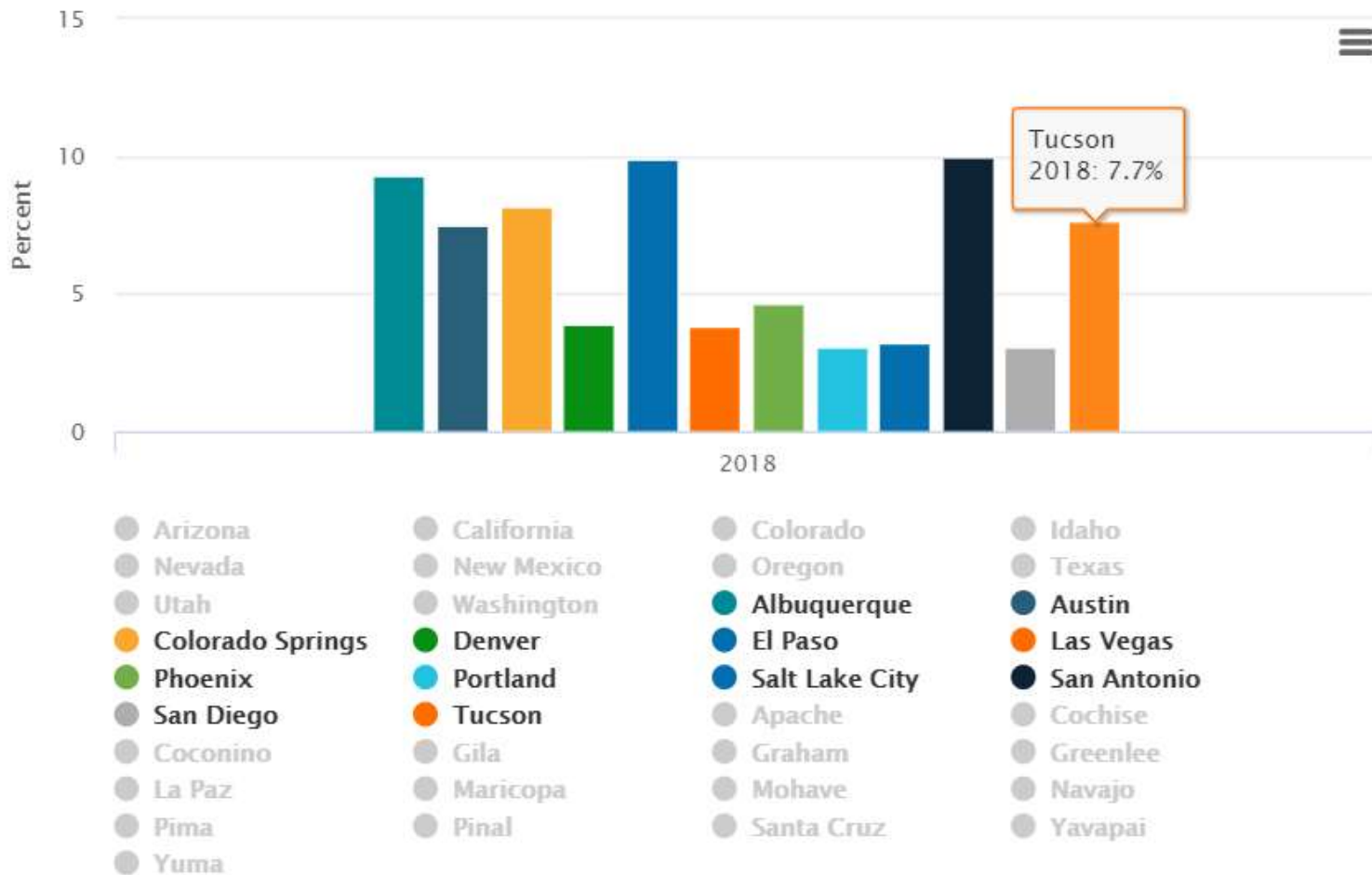
# Percent Food Insecure (2017)







# Percent Limited Access to Food





## How Food Secure are Tucson's Children?

**COVID-19 Impacts Food Insecurity for Children**

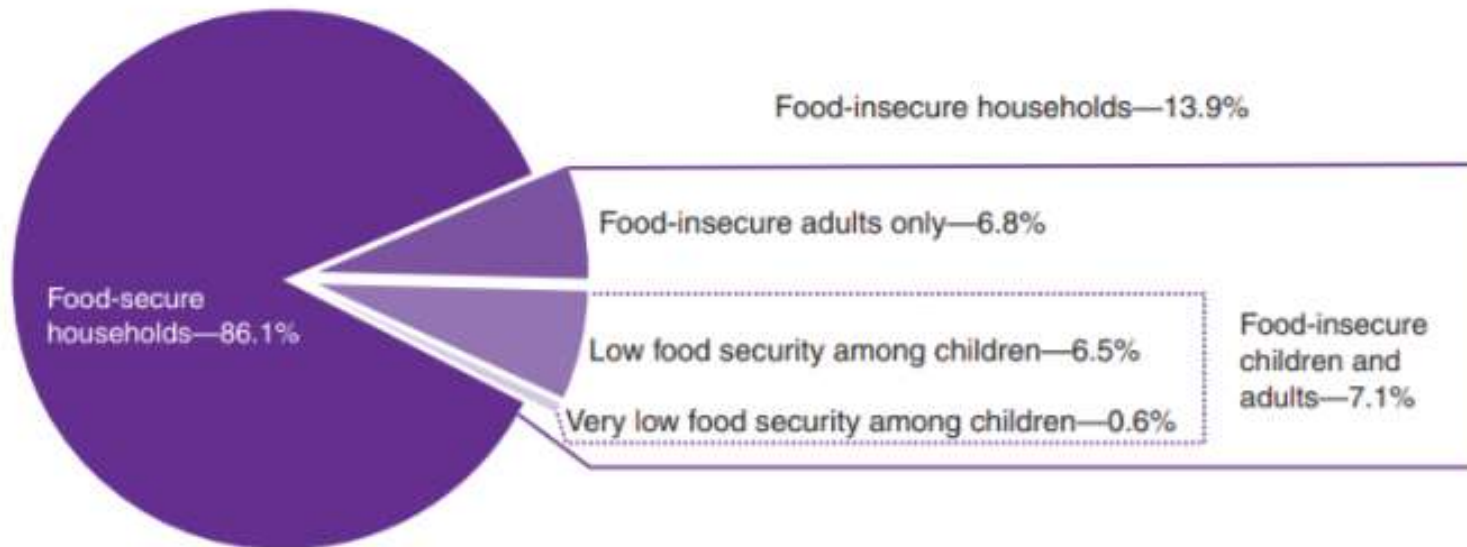


[Learn More](#)





## U.S. Households with Children by Food Security Status (2018)



Source: USDA, Economic Research Service using data from U.S. Department of Commerce, U.S. Census Bureau, 2018 Current Population Survey Food Security Supplement.





MAKING ACTION POSSIBLE  
for Southern Arizona

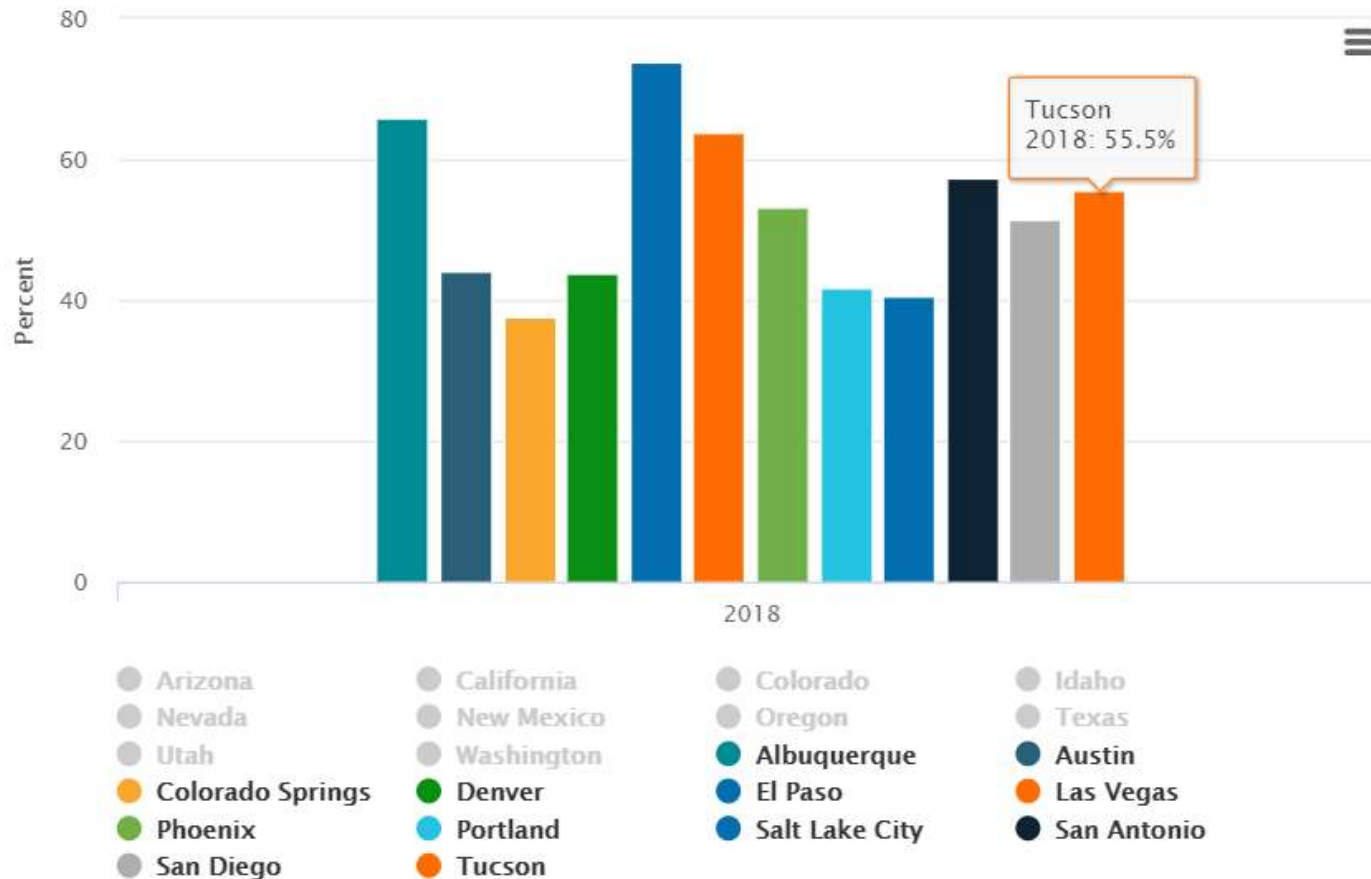


# Federal Nutrition Programs

- ▶ SNAP – Supplemental Nutrition Assistance Program
- ▶ School Breakfast Program
- ▶ Summer Food Service Program
- ▶ National School Lunch Program
  - ▶ Free lunch - income less than 130% of the federal poverty level
  - ▶ Reduced lunch – income less than 185% of the federal poverty level
  - ▶ Current federal poverty level for a family of three is \$21,720

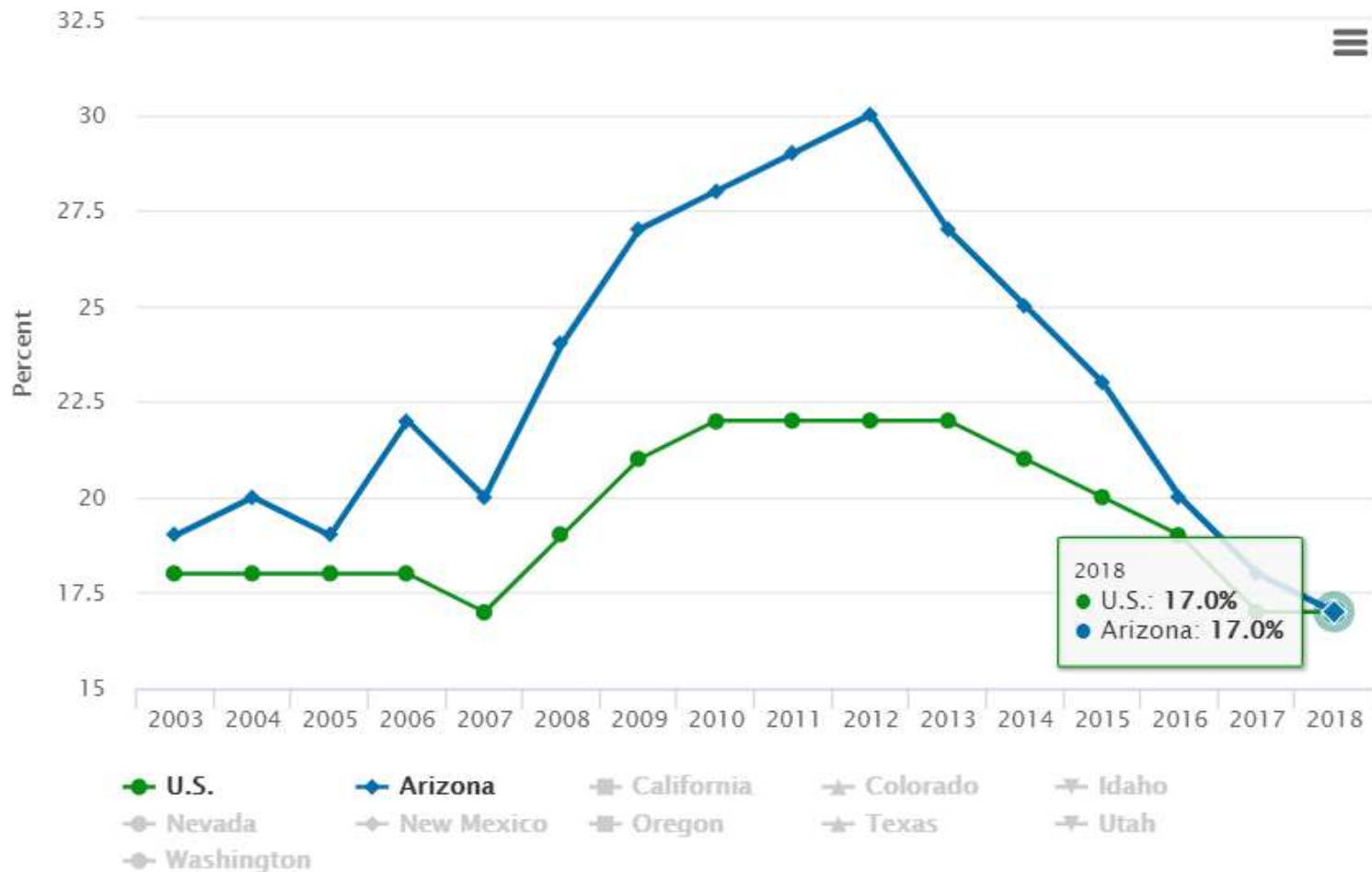


# Percent of Children Enrolled in Free or Reduced Lunch Program





# Children Living in a Household that were Food Insecure at Some Point During the Year





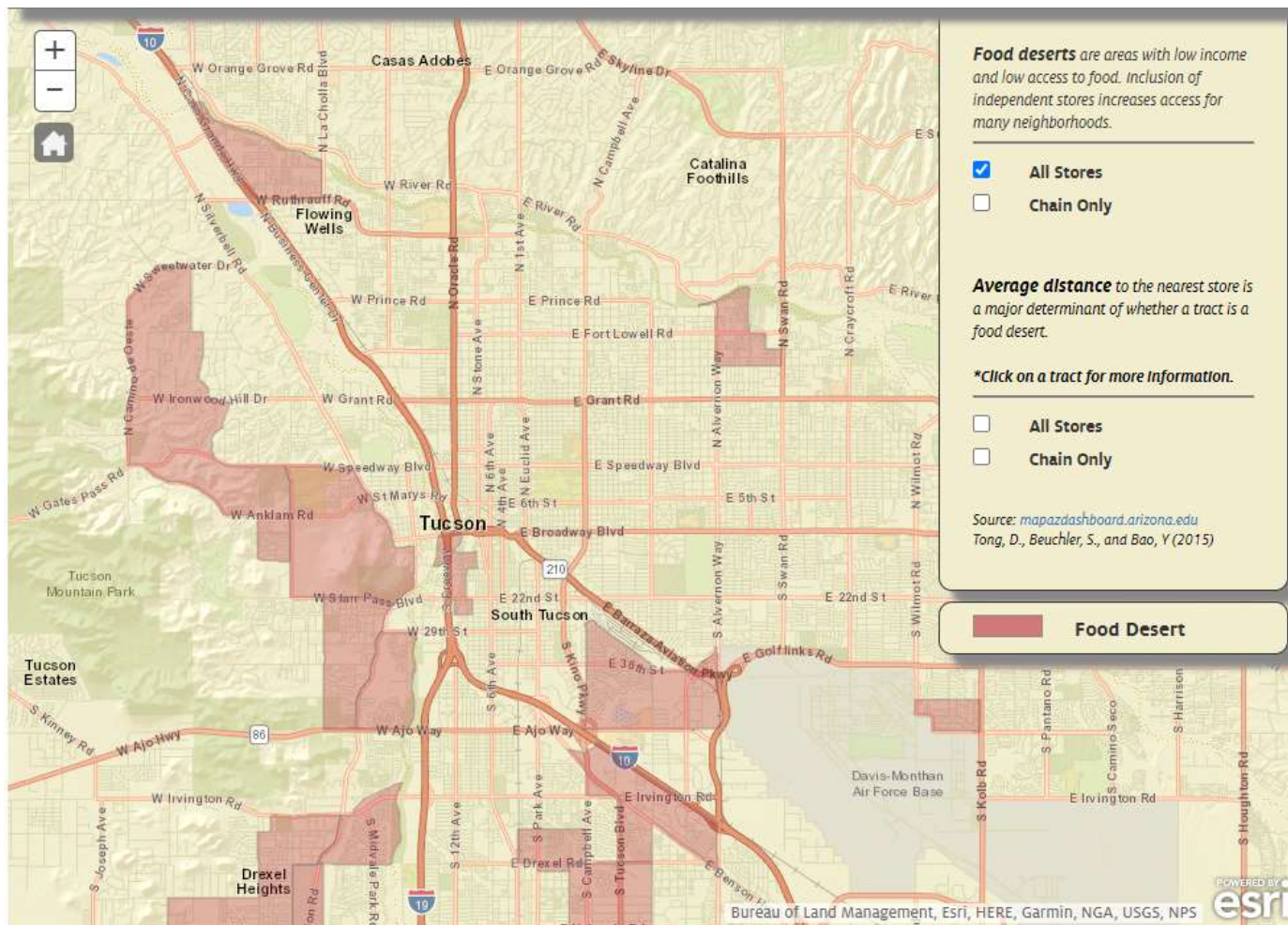


# MAP White Paper

- ▶ **Farm-To-School Programs in Southern Arizona**
  - ▶ Encourages local food purchasing by schools to provide fresh, healthy school meal options
  - ▶ Analysis of farm-to-school programs including their characteristics and activities in Southern Arizona
- ▶ **Food Accessibility in Southern Arizona**
  - ▶ Mapping the growth, trajectory, and market base of Tucson farmers' markets
  - ▶ Analyzes the location of farmer markets to select variables such as households with children, poverty rate, vehicle-less households, and ethnicity.
- ▶ **A Comprehensive Food Access Analysis in Tucson**
  - ▶ Addresses aspects of food store diversity and variety in an evaluation of food access, especially in low-income neighborhoods



# Food Deserts and Average Distance to the Nearest Store





## Uncertainty Looms

- ▶ **Will COVID-19 Impact Food Insecurity?**
  - ▶ Food insecurity typically increases during economic downturns
  - ▶ World Bank
    - ▶ additional 135 million people worldwide will face food insecurity
  - ▶ Feeding America
    - ▶ increase of 17.1 million in the U.S.
  - ▶ U.S. Census Bureau's Household Pulse Survey
    - ▶ 3.9 million children experienced COVID-19 related food shortages in June





# Key Takeaways

- ▶ **Tucson has a high percentage of food insecure individuals**
  - ▶ 4<sup>th</sup> highest percentage among peer western metros
  - ▶ Expected to increase because of COVID-19 pandemic
  - ▶ Arizona was slightly higher and third among western states
- ▶ **Limited access to food**
  - ▶ Arizona's had the third highest rate among western states
  - ▶ Tucson's rate of 7.7% placed it in the middle of peer metros
- ▶ **Children living in food insecure households**
  - ▶ In the U.S. nearly 14% of households with children are food insecure
    - ▶ Of which 7% have food insecure children
  - ▶ Food insecurity has declined since the end of the Great Recession
  - ▶ Households with children have been hit the hardest by the financial implications of COVID-19
- ▶ **COVID-19 will have an impact on food security worldwide**
  - ▶ More data and time is needed to estimate the true impact



# Engage With Us

## Subscribe For Updates

Get the latest MAP updates



## Ask a Researcher

Connect with a researcher for advice and statistics about data on this site.

